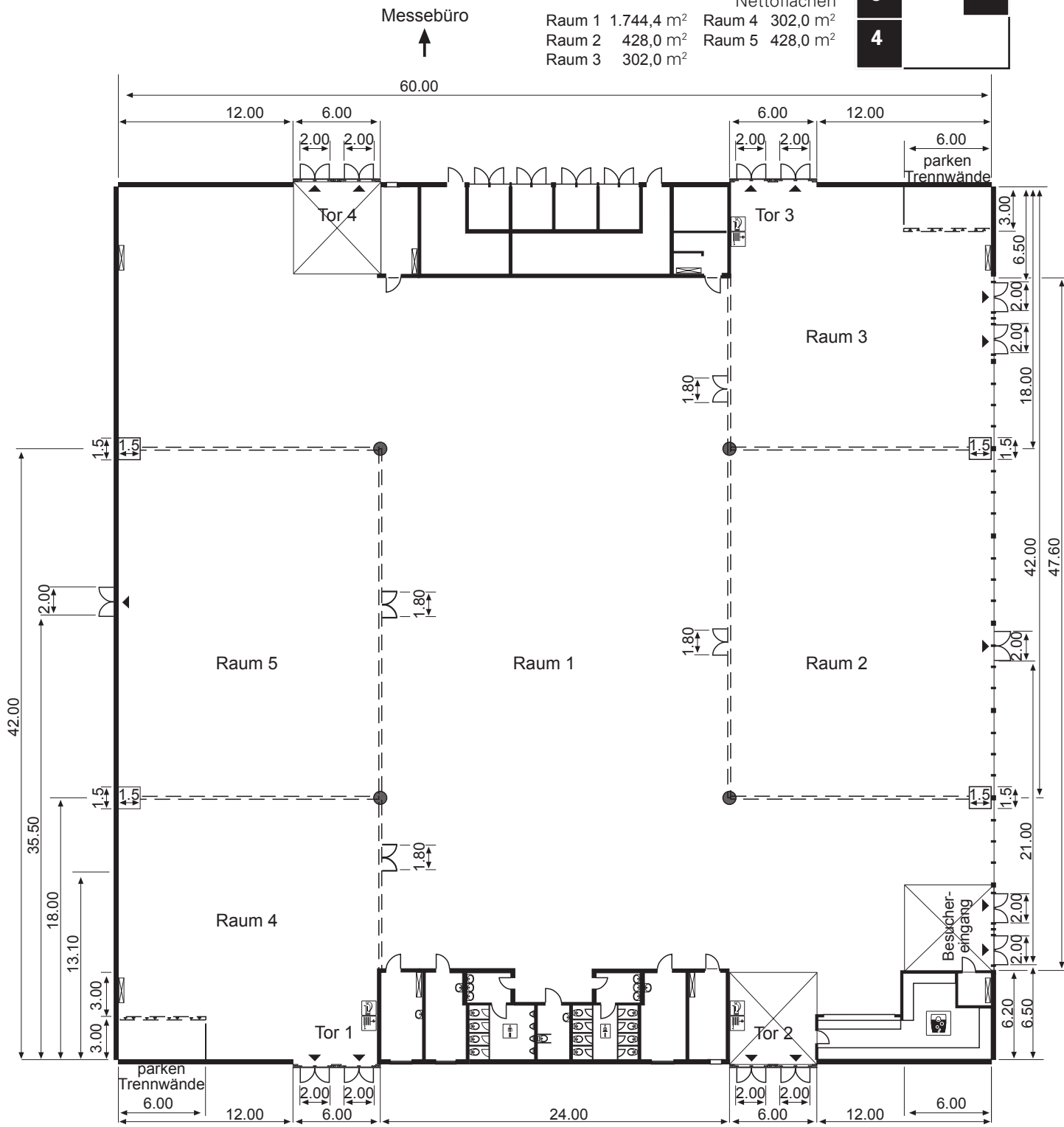
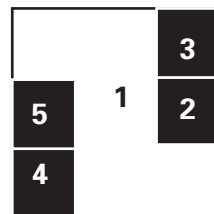

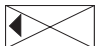
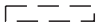


# Die MESSE MAGDEBURG – Halle 1, Raum 1-5 – Grundriss

Kapazität  
 Bruttofläche  
 60 m x 60 m = 3.600 m<sup>2</sup>  
 Nettoflächen  
 Raum 1 1.744,4 m<sup>2</sup> Raum 4 302,0 m<sup>2</sup>  
 Raum 2 428,0 m<sup>2</sup> Raum 5 428,0 m<sup>2</sup>  
 Raum 3 302,0 m<sup>2</sup>



-  Pfeiler  $\varnothing$  0,90 m
-  Notausgang (6,00 m x 6,00 m)
- Tor 1–4 Schiebetoranlage  
 lichte Breite x lichte Höhe  
 4,90 m x 4,00 m
-  Trennwände (variabel)
- Notausgangstüren  
 lichte Breite x lichte Höhe  
 2,00 m x 2,65 m

